



www.roveelectricindia.com



REAPWELL INDUSTRIES

INDIA

SF No : 193/1B, Uzhaippalar Street, Udayampalayam Road, Vellakinar Village, Coimbatore-641029.

Email : sales@roveelectric.co.in
raghupathi@roveelectric.co.in

**Under Progress

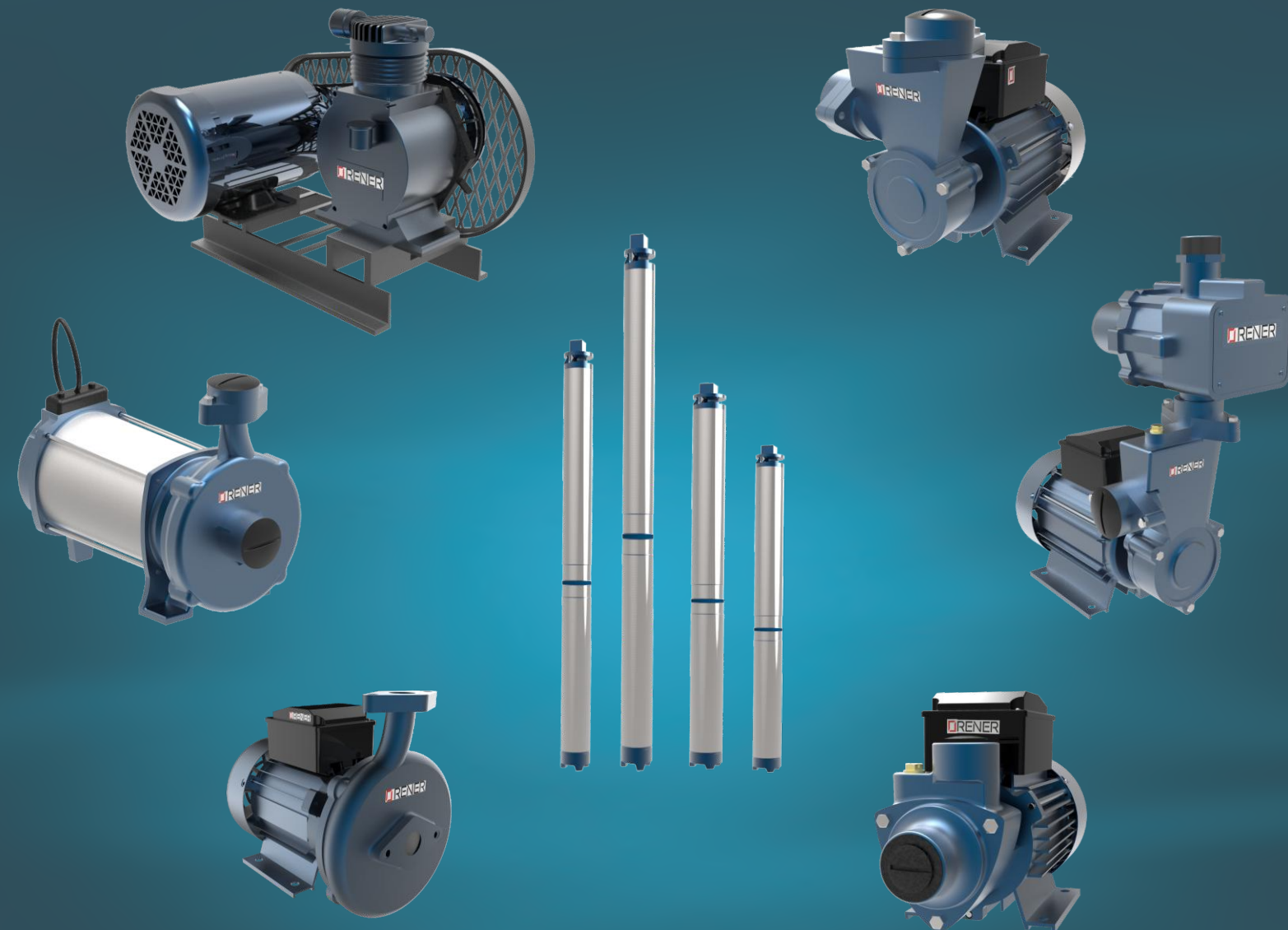


ISO 9001 Quality
ISO 14001 Environment

Products are conforms to CE RoHS

Distributor

Dealer



REAPWELL INDUSTRIES

REGENERATIVE SELF PRIMING MONOBLOCK WITH PERIPHERAL IMPELLER

FEATURES AND CONSTRUCTION

- Aluminum extruded body for better heat dissipation and corrosion resistance
- Motor can with stand wide voltage fluctuation from 170 to 270 volts
- Self priming up to 7.5 meters
- Fitted with thermal over load protector (TOP) prevents motor burning
- Total enclosed fan cooled motor (TEFC) , no entry of dust particles
- Capacitor start and run motor
- Runs silently under all conditions
- Energy efficient motor for low power consumption and minimum temperature
- Class F insulation
- Double shield bearing needs no external lubrication and trouble free operation
- Fitted with high quality ceramic and carbon mechanical seal
- Easy maintenance and spares available
- High tensile brass impeller for better and trouble free operation
- Stainless steel shaft AISI 410 grade used for rust free operation
- High quality cast iron CIGR180

TECHNICAL SPECIFICATION

Power rating	0.37 kW (0.5 HP) HD	0.75 kW (1.0 HP) HD	0.37 kW (0.5 HP) LD	0.75 kW (1.0 HP) LD
Head range	6 – 30 Meters	6 – 50 Meters	6 – 25 Meters	6 – 40 Meters
Discharge Range	3200 – 740 LPH	5770 – 1000 LPH	2000 – 495 LPH	4700 – 680 LPH
Voltage Range	180 – 260 Volts	180 – 260 Volts	180 – 260 Volts	180 – 260 Volts

APPLICATION

• Bungalows	• Hospital
• Houses	• Industrials
• Garages	• Hotels

CONSTRUCTION & SAFETY STANDARDS

Suitable for use with clean water that does not contains abrasive particles and with liquids that are not chemically aggressive towards the materials from which the pump is made. The pump should be installed in an enclosed environment or sheltered from inclement weather.

**Under Progress



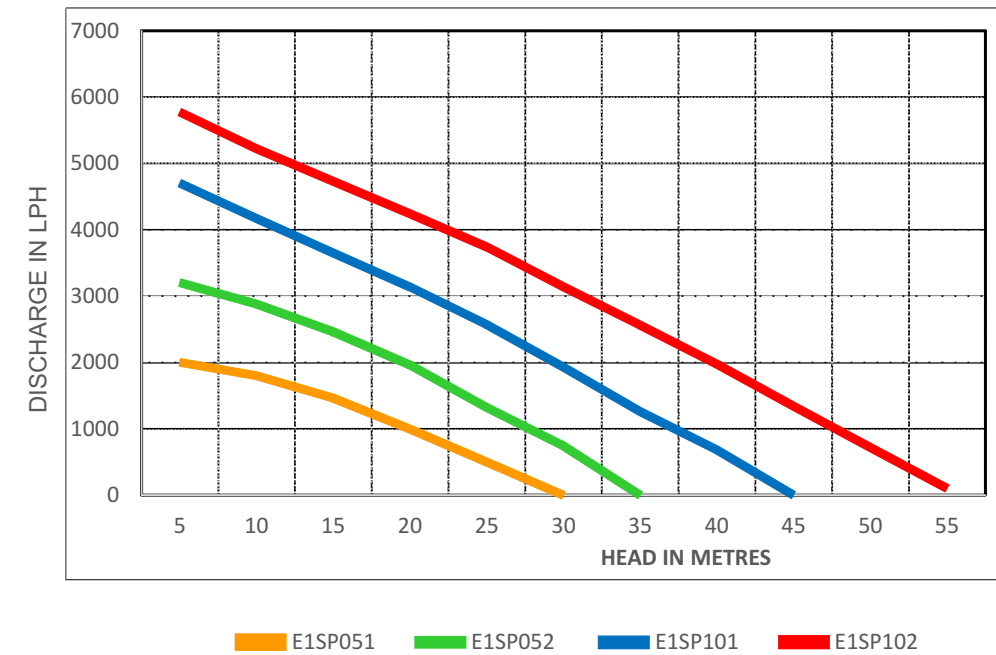
ISO 9001 Quality
ISO 14001 Environment

Products are conforms to

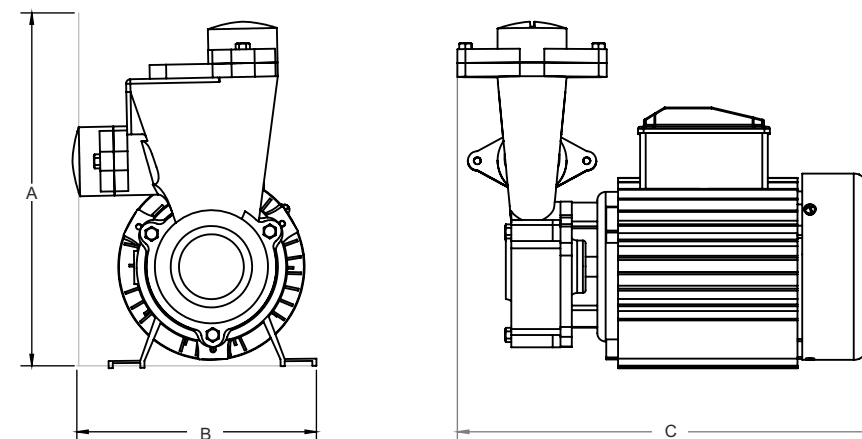
POWER CONSUMPTION AND FLOW

PUMP MODEL	POWER RATING	PIPE SIZE (INCH))		CURRENT MAX	RATED VOLTAGE	TOTAL HEAD IN METRES										
		SUC	DEL			5	10	15	20	25	30	35	40	45	50	55
						DISCHARGE IN LITRE PER HOUR										
E1SP051	0.5	1	1	3	230	2000	1800	1460	1000	495	0					
E1SP052	0.5	1	1	3	230	3200	2880	2460	1960	1320	740	0				
E1SP101	1.0	1	1	5	230	4700	4170	3650	3140	2570	1930	1260	680	0		
E1SP102	1.0	1	1	5	230	5770	5220	4730	4240	3740	3140	2560	1970	1340	720	0

FLOW GRAPH



DIMENSION



Dimensions	A Height	B Width	C Length
E1SP051	208	150	274
E1SP101	246	174	306
E1SP052	176	120	220
E1SP102	246	174	300

MONOBLOCK WITH PERIPHERAL IMPELLER

FEATURES AND CONSTRUCTION

- Aluminum extruded body for better heat dissipation and corrosion resistance
- Motor can with stand wide voltage fluctuation from 170 to 270 volts
- Fitted with thermal over load protection (TOP) prevents motor burning
- Total enclosed fan cooled motor (TEFC) , no entry of dust particles
- Capacitor start and run motor
- Runs silently under all conditions
- Energy efficient motor for low power consumption and minimum temperature
- Class F insulation
- Double shield bearing needs no external lubrication and trouble free operation
- Fitted with high quality ceramic and carbon mechanical seal
- Easy maintenance and spares available
- High tensile brass impeller for better and trouble free operation
- Stainless steel shaft AISI 410 grade used for rust free operation
- High quality cast iron CIGR180

TECHNICAL SPECIFICATION

Power rating	0.37 kW (0.5 HP)	0.75 kW (1.0 HP)
Head range	6 – 35 Meters	6 – 45 Meters
Discharge Range	2800 – 1000 LPH	5400 – 1000 LPH
Voltage Range	180 – 260 Volts	180 – 260 Volts

APPLICATION LIMITS

- Manometric suction lift up to 8 m
- Liquid temperature between -10 C° and +60 C°
- Ambient temperature up to +50 C°

CONSTRUCTION & SAFETY STANDARDS

Suitable for use with clean water that does not contains abrasive particles and with liquids that are not chemically aggressive towards the materials from which the pump is made. The pump should be installed in an enclosed environment or sheltered from inclement weather.



**Under Progress



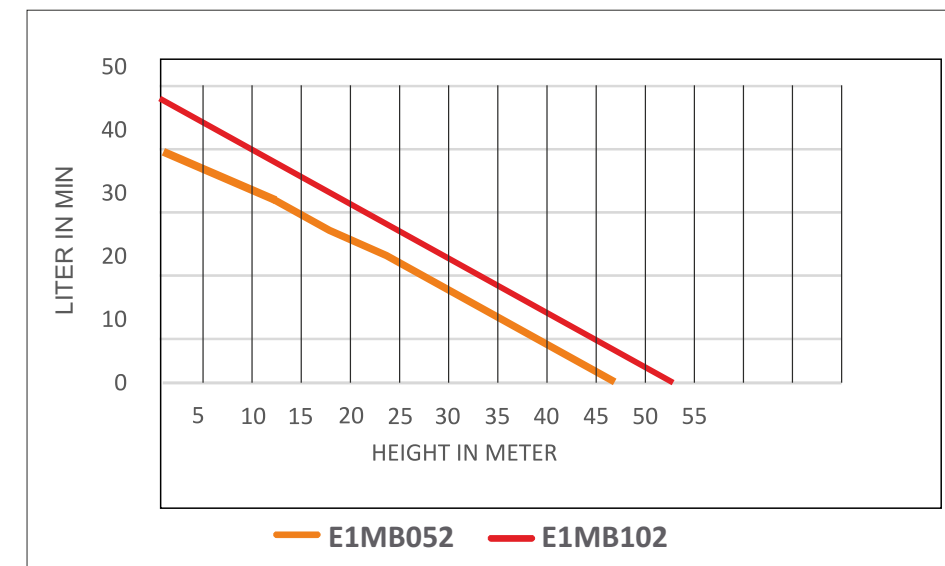
ISO 9001 Quality
ISO 14001 Environment

Products are conforms to **CE** **RoHS**

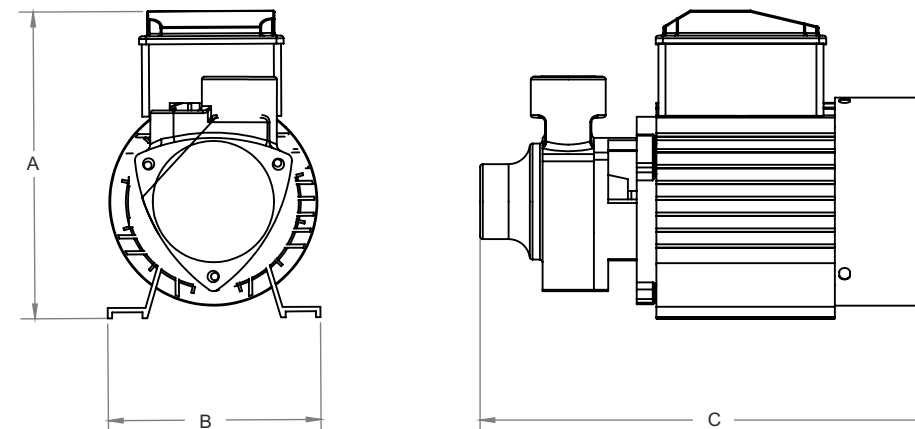
POWER CONSUMPTION AND FLOW

PUMP MODEL	POWER RATING	PIPE SIZE (INCH)		CURRENT MAX AMPS	RATED VOLTAGE	TOTAL LITER PER MIN										
		SUC	DEL			5	10	15	20	25	30	35	40	45	50	55
						HEIGHT IN METER										
E1MB052	0.5	1	1	3	230	35	30	27	24	20	15	10	5	0		
E1MB102	1.0	1	1	5	230	45	40	35	30	25	20	15	10	5	0	

FLOW GRAPH



DIMENSION



Dimensions	A Height	B Width	C Length
E1MB052	172	120	260
E1MB102	220	160	300

CENTRIFUGAL MONOBLOCK PUMPS

FEATURES AND CONSTRUCTION

- ❖ High operating Efficiency
- ❖ Lower power Consumption
- ❖ Dynamically balanced rotating parts
- ❖ Rigid Construction
- ❖ Inbuilt thermal overload protector

APPLICATION LIMITS

- Manometric suction lift up to 8 m
- Liquid temperature between -10 C° and +60 C°
- Ambient temperature up to +50 C°

TECHNICAL SPECIFICATION

Power Range	0.37 kW (0.5 HP) – 2.2kW (3HP)
Speed / Rotation direction	2900 RPM / Clockwise
Degree of protection	IP44 / IP54

Maximum Head	42m – 138 ft
Maximum Suction Lift	Upto 7m
Maximum Liquid Temp	45C°
Maximum Ambient Temp	55C°

MATERIAL OF CONSTRUCTION

Pump Casing	Cast Iron
Moor Frame	Aluminium
Impeller	Cast iron / S.S/ Noryl
Shaft	S.S 410
Sealing	Mechanical seal (Carbon & Ceramic)



**Under Progress



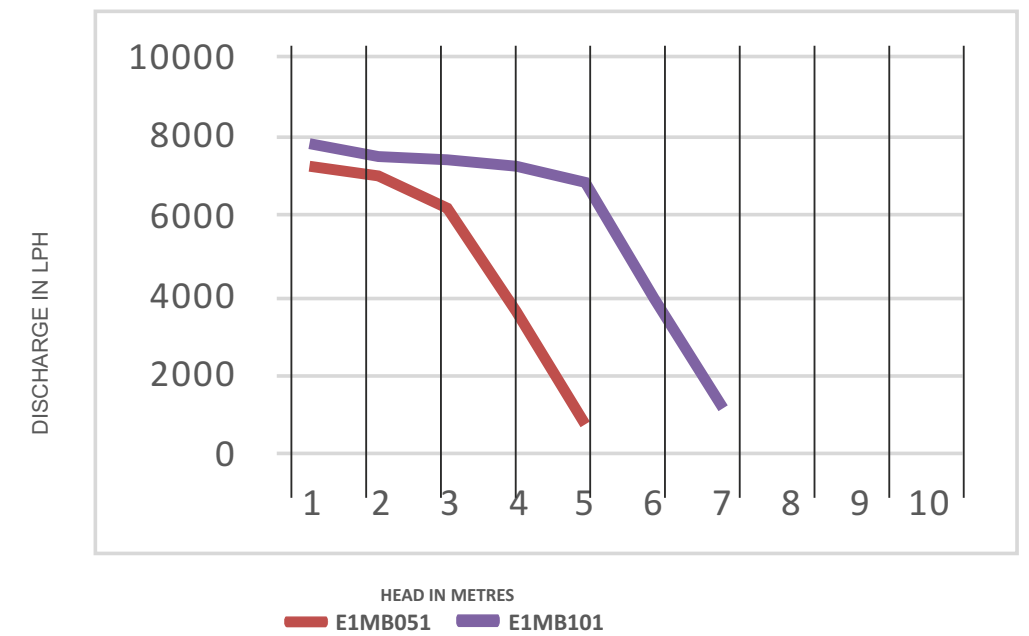
ISO 9001 Quality
ISO 14001 Environment

Products are conforms to **CE** **RoHS**

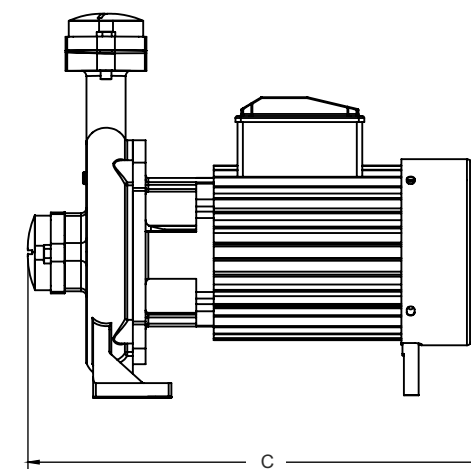
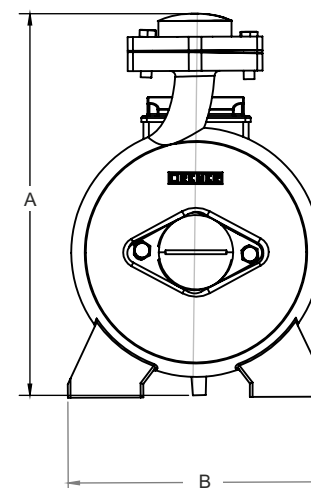
POWER CONSUMPTION AND FLOW

PUMP MODEL	POWER RATING	PIPE SIZE (INCH)		CURRENT MAX	RATED VOLTAGE	HEADS IN METER									
		SUC	DEL			5	10	15	20	25	30	35	40	45	50
				AMPS	VOLTS	DISCHARGE IN LITER PER HOUR									
E1MB051	0.5	1	1	4.6	230	7200	7000	6200	3600	750	-	-	-	-	-
E1MB101	1.0	1.25	1	6.4	230	7800	7500	7400	7200	6800	4000	1200	-	-	-

FLOW GRAPH



DIMENSION



Dimensions	A Height	B Width	C Length
E1MB051	208	150	274
E1MB101	246	174	306

OPEN WELL PUMP

FEATURES AND CONSTRUCTION

- ❖ High operating Efficiency
- ❖ Lower power Consumption
- ❖ Dynamically balanced rotating parts
- ❖ Rigid Construction
- ❖ Inbuilt thermal overload protector
- ❖ Filled with special coolant not harmful to living beings
- ❖ Prevent Rusting and better Reliability
- ❖ High graded Stainless Steel Body

APPLICATION LIMITS

- Manometric suction lift up to 8 m
- Liquid temperature between -10 C° and +60 C°
- Ambient temperature up to +50 C°

TECHNICAL SPECIFICATION

Power Range	0.37 kW (0.5 HP) – 2.2kW (3HP)
Speed / Rotation direction	2900 RPM / Clockwise
Degree of protection	IP44 / IP54

Maximum Head	42m – 138 ft
Maximum Suction Lift	Upto 7m
Maximum Liquid Temp	45C°
Maximum Ambient Temp	55C°



MATERIAL OF CONSTRUCTION

Pump Casing	Cast Iron
Moor Frame	Aluminium
Impeller	Cast iron / S.S/ Noryl
Shaft	S.S 410
Sealing	Mechanical seal (Carbon & Ceramic)

**Under Progress



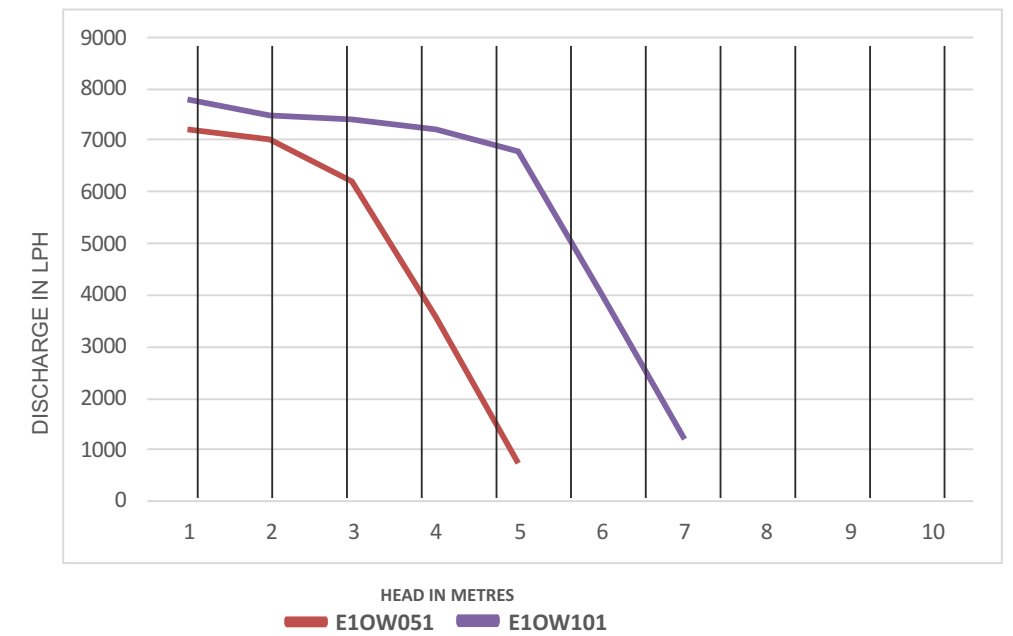
ISO 9001 Quality
ISO 14001 Environment

Products are conforms to **CE** **RoHS**

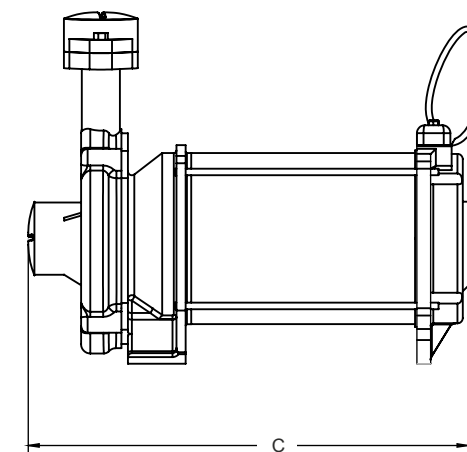
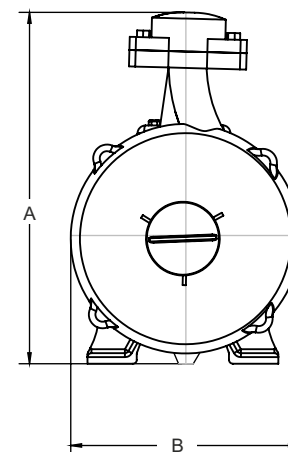
POWER CONSUMPTION AND FLOW

PUMP MODEL	POWER RATING	PIPE SIZE (INCH)		CURRENT MAX	RATED VOLTAGE	HEADS IN METER									
		SUC	DEL			5	10	15	20	25	30	35	40	45	50
				AMPS	VOLTS	DISCHARGE IN LITER PER HOUR									
E10W051	0.5	1	1	4.6	230	7200	7000	6200	3600	750	-	-	-	-	-
E10W101	1.0	1.25	1	6.4	230	7800	7500	7400	7200	6800	4000	1200	-	-	-

FLOW GRAPH



DIMENSION



Dimensions	A Height	B Width	C Length
E10W051	208	150	274
E10W101	246	174	306